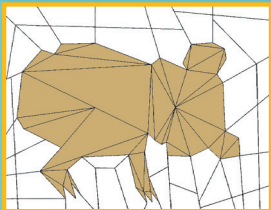
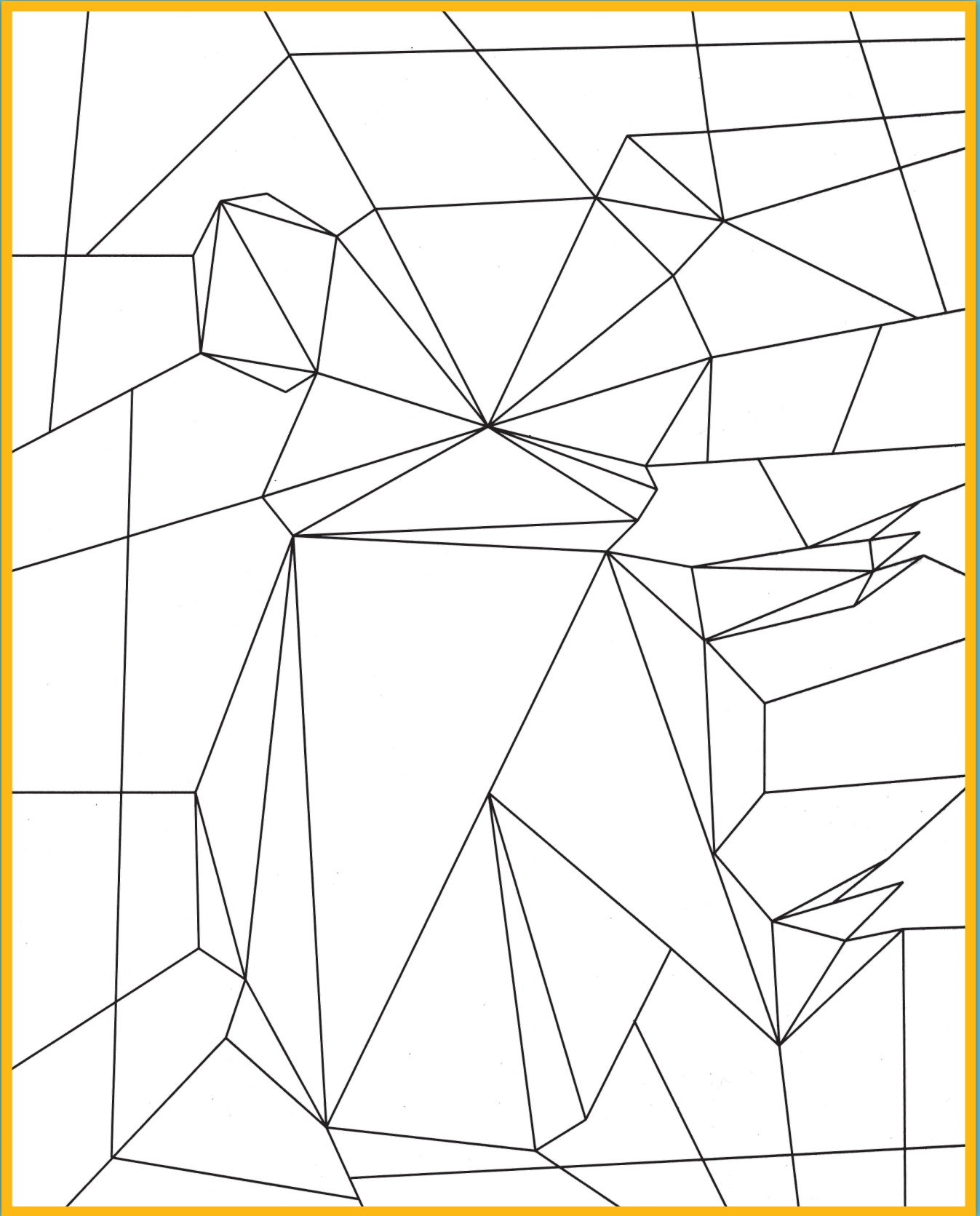


A SHY FRIEND

Color all the triangles brown or gray to discover a shy Australian marsupial.



Answer:



KOALAS

& Other Australian Animals

Zooworks®

Millie C.,
age 8



Evelyn R., age 8



Emmett C., age 5

Elizabeth H., age 7



Living high up in the eucalyptus trees
 Resting on branches and eating juicy leaves.
 Big fluffy ears and a cute black nose
 Soft gray fur and strong-clawed toes!
 Koalas are shy but friendly, and
 They stay up in trees, they don't like to
 be on land.

In the day with lots of hot sun,
 Koalas rest, they don't run!
 Australia is where koalas are found,
 Three cheers for koalas, all around!
 By Kendi M., age 11



Luke M.,
age 12



Aurora W.,
age 10

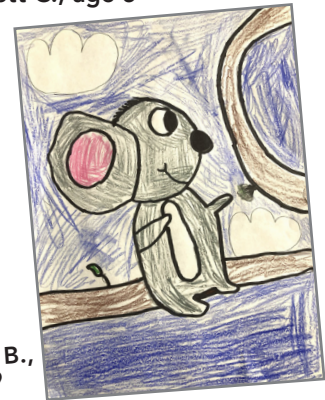
Drew M.,
age 7



Luca B.,
age 5



Hildy B.,
age 9



Look for Activity Pages Online!

Visit Rangerrick.org/ZBactivities
 That's where you'll find fun activities
 to print or download.

Plus you'll find:

- Interactive games
- Animal videos



Tell us what
 you thought of
 this book!

Would you like to see your
 work published in
Ranger Rick Zoobooks?

Here's what to do: Go to
www.rangerrick.org/zooworks
 for rules
 and deadlines.



We want to see your original
 poem, story, or drawing by
 October 29, 2024 for Chimpanzees or
 November 26, 2024 for Wild Dogs.

Australian Cities

A Key Word Puzzle

Koalas, kangaroos, cuscuses, platypuses, and spiny anteaters all live in Australia. Australia is a continent in the Southern Hemisphere of the world. The entire continent is south of the equator. Australia is the country where the Australian people live. They have built many cities, as shown in the map below.

You can use the map to solve the Australian Cities Key Word Puzzle. Notice that one letter from each city name spells the word Australia. Use this clue and the list of clues below to figure out which city goes where in the puzzle. Have fun journeying through the map to learn about these Australian cities.

1. The capital of Australia.
2. The most southern city in Australia.
3. A famous, large city northeast of the capital.
4. The city in western Australia.
5. The farthest eastern city.
6. The most northern city.
7. The city due west of Sydney.
8. The city in the center of Australia.
9. The city on the east coast north of Brisbane.



Did you know?
If you visit Australia, you must ask for **lollies** if you want candy, **brekkie** if you want breakfast, and **chewie** if you want gum!



| | | | | | | | | | | | | | | | | | | | |
|--|--|--|--|---|--|--|--|--|--|--|--|--|--|--|--|--|--|--|--|
| | | | | A | | | | | | | | | | | | | | | |
| | | | | U | | | | | | | | | | | | | | | |
| | | | | S | | | | | | | | | | | | | | | |
| | | | | T | | | | | | | | | | | | | | | |
| | | | | R | | | | | | | | | | | | | | | |
| | | | | A | | | | | | | | | | | | | | | |
| | | | | L | | | | | | | | | | | | | | | |
| | | | | I | | | | | | | | | | | | | | | |
| | | | | A | | | | | | | | | | | | | | | |

Answers: 1. Canberra; 2. Melbourne; 3. Sydney; 4. Perth; 5. Brisbane; 6. Darwin; 7. Adelaide; 8. Alice Springs; 9. Cairns

Australian Animals

A Secret Word Puzzle

What do kangaroos, koalas, and wombats have in common? To find out, solve all 10 of the problems in this puzzle. You will reveal a secret word that describes

an unusual group of mammals, many of which are found in Australia. If you need more clues, turn to the pages indicated at the end of the problems.

1.

2.

3.

4.

5.

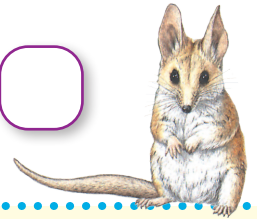
6.

7.

8.

9.

10.



1. Living in an underground burrow, this common marsupial is an expert digger. (page 12)
2. The type of tree that a koala eats and lives in. (inside front cover)
3. The success of this animal is due in part to its flexibility. (page 10)
4. This animal does well living close to people. (page 13)
5. A prehensile tail helps this marsupial hang on in the trees where it lives. (page 13)
6. The place where all marsupials carry their young for a time. (page 6)
7. What all mammals, including marsupials, eat when they are babies. (page 7)
8. This animal has no fear of high places. (page 11)
9. This animal looks cuddly. (inside front cover)
10. Small groups in which kangaroos live. (page 8)



Answers:
 1. wombat
 2. eucalyptus
 3. kangaroo
 4. possum
 5. cuscus
 6. pouch
 7. milk
 8. wallaby
 9. koala
 10. mobs
Secret Word:
 Marsupials