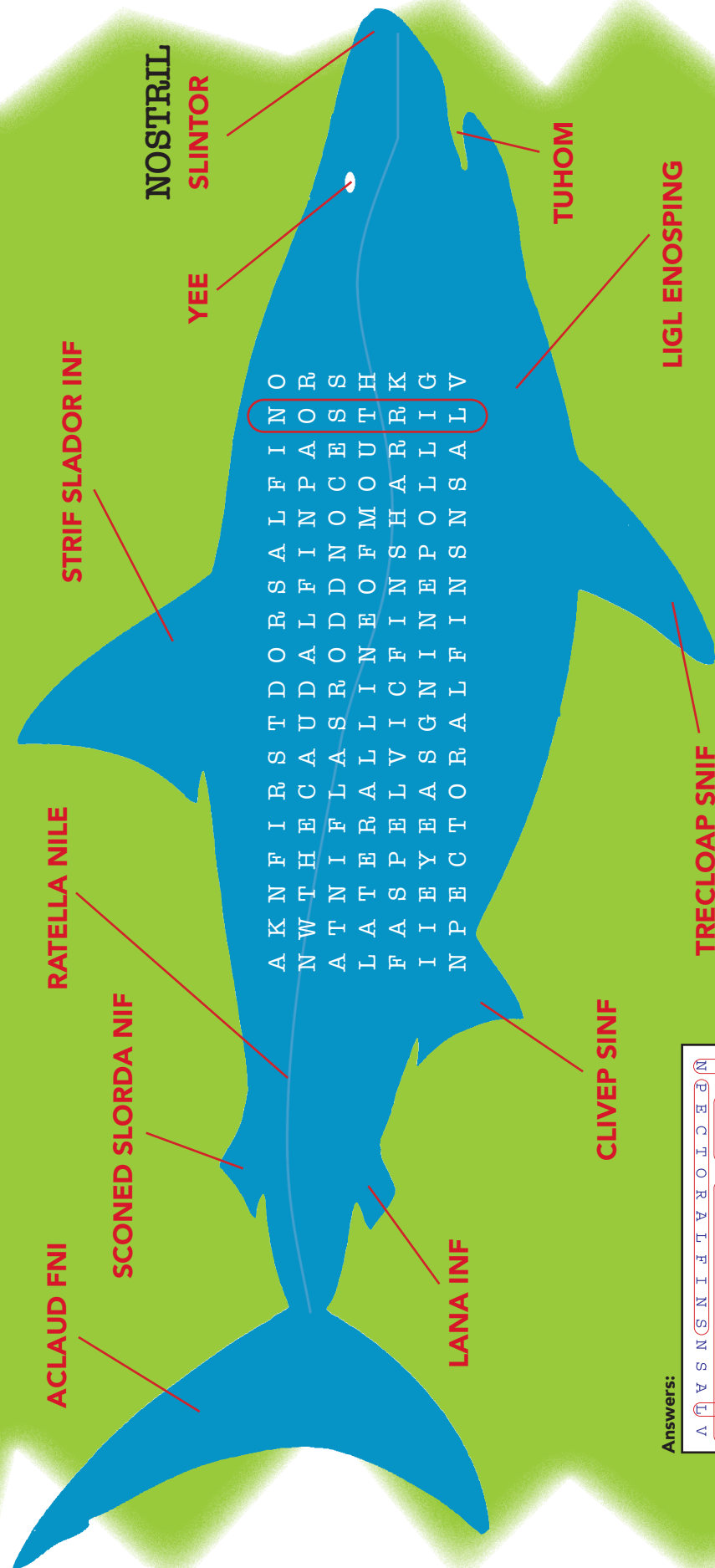


Shark Hunt

You can go on a shark hunt while thinking about words that tell more about a shark. First, unscramble each label pointing to a part of the shark. (Check page 15 for help.) After you unscramble a label, look for it in the word search

puzzle. When you find the word in the puzzle, circle it. In this puzzle, words can go up and down or across. Watch out for backwards words, too. Word search answers appear below. We have completed one answer for you. Happy hunting.



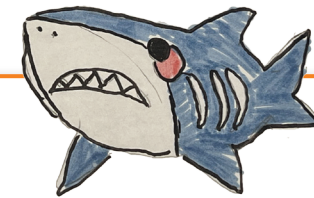
A K N F I R S T O O R S A L P C O U R I L
N W T H E F L A L V I G A L I N F I N S
A T N I F R A L L A S G A L I N F I N S
L A S P E E C T O R A L I N F I N S
I N P E E C T O R A L I N F I N S
O R S A L P C O U R I L
N W T H E F L A L L A S G A L I N F I N S
A T N I F R A L L A S G A L I N F I N S
L A S P E E C T O R A L I N F I N S
I N P E E C T O R A L I N F I N S

Answers:

A	T	V	S	N	I	F	T	V	R	O	L	C	E	P
E	I	T	O	E	N	I	N	S	V	E	A	E	I	I
F	A	S	P	E	L	V	I	C	I	T	V	A	T	
K	R	A	V	H	S	(N)	I	F	L	A	S	G	A	L
S	H	E	L	L	O	O	E	N	I	T	V	A	T	
S	R	O	V	A	F	I	E	C	T	O	R	A	L	I
N	O	R	S	A	L	P	C	O	U	R	I	L		



SHARKS

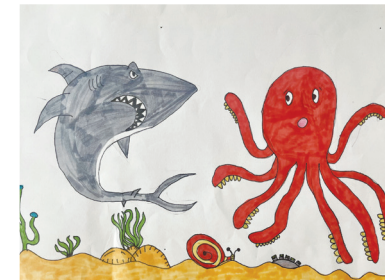


Edward F., age 11

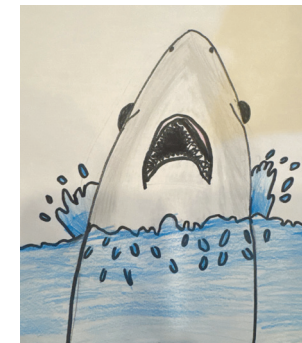


Jack P., age 7

Zooworks®



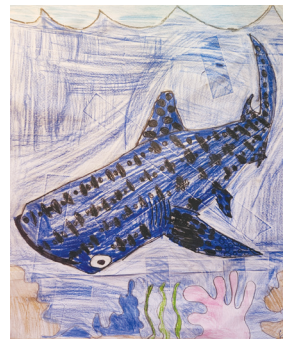
Enzo D., age 10



Caroline V., age 7



Mittie C., age 6



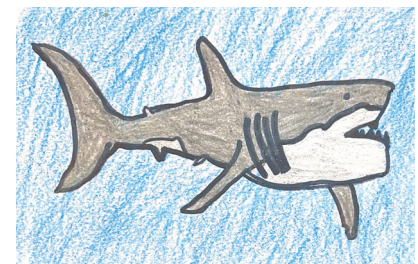
Kaylee R., age 8



Sloane G., age 9

What's this?
What's this I see?
Something sleek and shadowy.
Something dark and hungry.
Something coming straight at...me!
Swimming fast...faster still.
Still chasing me, chasing me, chasing me.
I swim, I swim fast.
I swim fast enough, it seems
He swims...away.
I am safe, I AM SAFE.
It was, at least I think it was
A SHARK.

By Samuel W., age 9



Mabel W., age 10



Tell us what
you thought of
this book!

Look for Activity Pages Online!

Visit Rangerrick.org/ZBactivities
That's where you'll find fun activities
to print or download.

Plus you'll find:

- Interactive games
- Animal videos

Would you like to see your
work published in
Ranger Rick Zoobooks?

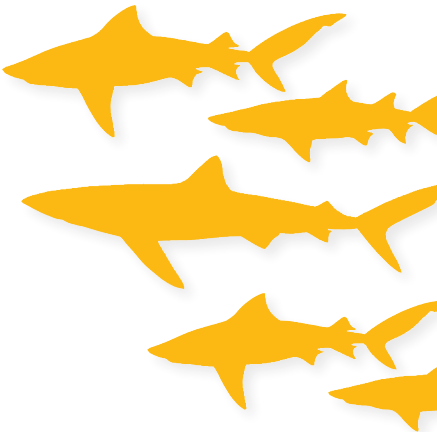
Here's what to do: Go to
[www.rangerrick.org/
zoozooks](http://www.rangerrick.org/zoozooks) for rules
and deadlines.



We want to see your original
poem, story, or drawing by
May 27, 2025 for Penguins or
June 17, 2025 for Little Cats.

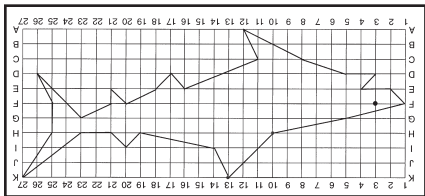
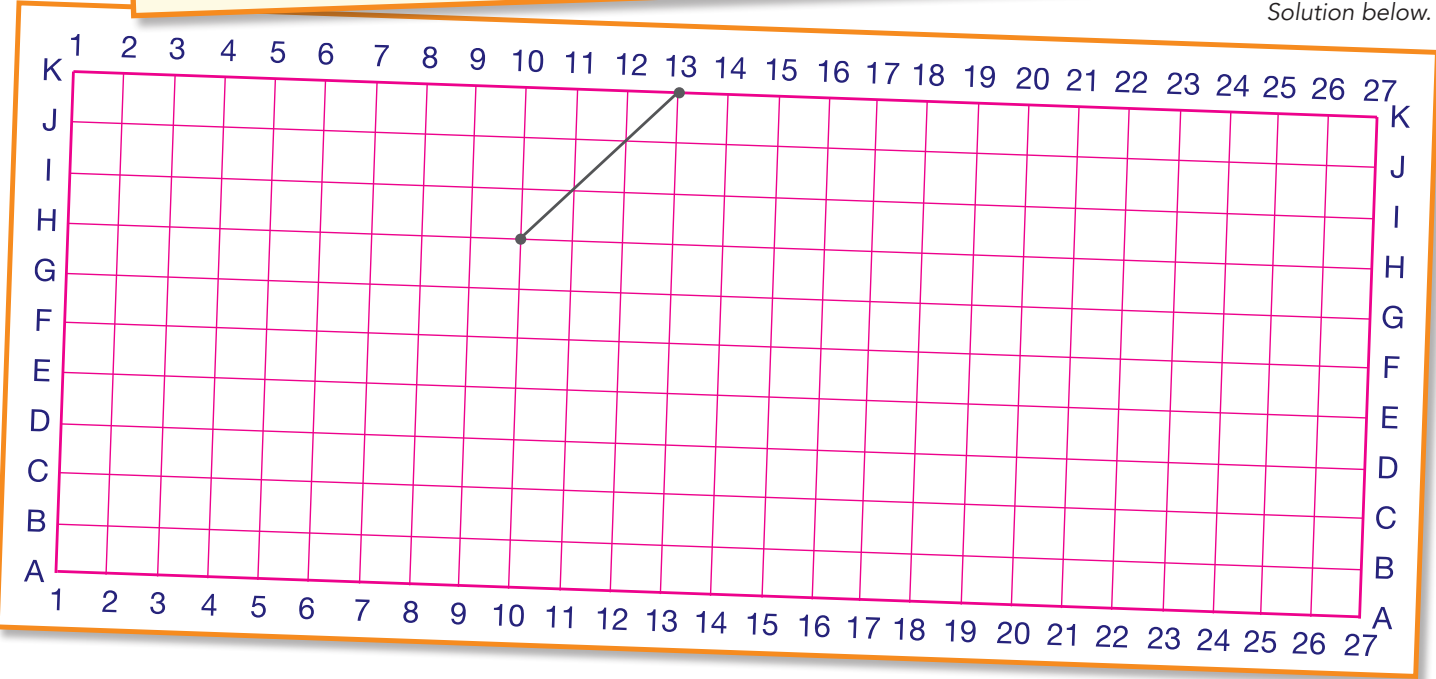
Shark Attack

Attack this activity with your wits. Did you know that you can draw a shark by making 27 straight lines? Well, it's true. We've drawn the first line for you. Notice how we marked two points, which are from the list below. We marked the first point (**H10**) at the spot where row **H** and column **10** meet. We marked the second point (**K13**) at the spot where **K** and **13** meet. Then, we drew a straight line between the two points. As you can see in the list of points below, the third point is at **I14**, where row **I** and column **14** meet. Find this spot on the grid and mark it. Then, draw a straight line between the third point (**I14**) and the second point (**K13**). Continue in this way until you have drawn all 27 lines. Be sure to add a round eye at **F3**.



- | | | | |
|---------------|----------------|----------------|----------------|
| 1. H10 | 8. K27 | 15. F20 | 22. D5 |
| 2. K13 | 9. H25 | 16. E18 | 23. D3 |
| 3. I14 | 10. F25 | 17. D17 | 24. E4 |
| 4. H19 | 11. D26 | 18. E16 | 25. E2 |
| 5. I20 | 12. G23 | 19. C11 | 26. F1 |
| 6. H21 | 13. F21 | 20. A12 | 27. G5 |
| 7. H23 | 14. E21 | 21. C8 | 28. H10 |

Solution below.



Solution:

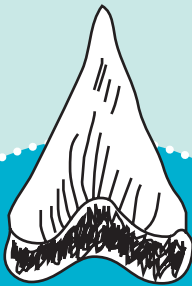
Toothsome Puzzle

Sharks might have been the first animals on Earth to have real teeth. *Where do some scientists believe shark teeth came from?* Solve the puzzle below to discover the surprising answer to the riddle.

Directions

- A.** There are nine clues listed below. Each clue defines a term that includes *tooth* or *teeth*. Use the clues to discover the missing words. Write each missing word in the blanks. The first one is done for you.
- B.** After you have filled in all the missing words, look for letters with numbers written below them. Each number shows on which line its letter needs to be written in the Riddle Answer at the bottom of the page. Write the letters above their numbers on the correct lines in the Riddle Answer. The first one is done for you.

- uneven checked pattern named for a dog's tooth: h o u n d s tooth
1
- pain in or near a tooth: tooth
2
- sharp pointed tooth next to the incisor: tooth
3
- having a fondness for sweet food: tooth
4
- one who leaves money for a tooth that has come out: tooth
5
- small pointed stick for getting food from between teeth: tooth
6
- dentures or artificial teeth: teeth
7
- moist mixture used to clean teeth: tooth
8
- tool used for cleaning teeth: tooth
9



Life-Sized Great White Shark Tooth

Some ancient sharks had really big teeth. Some were more than 6 inches long. Compare that with the tooth of a great white shark shown here in full size.

Riddle Answer:

d
1 2 3 4 5 6 7 8 9