

WOLVES

January 2026

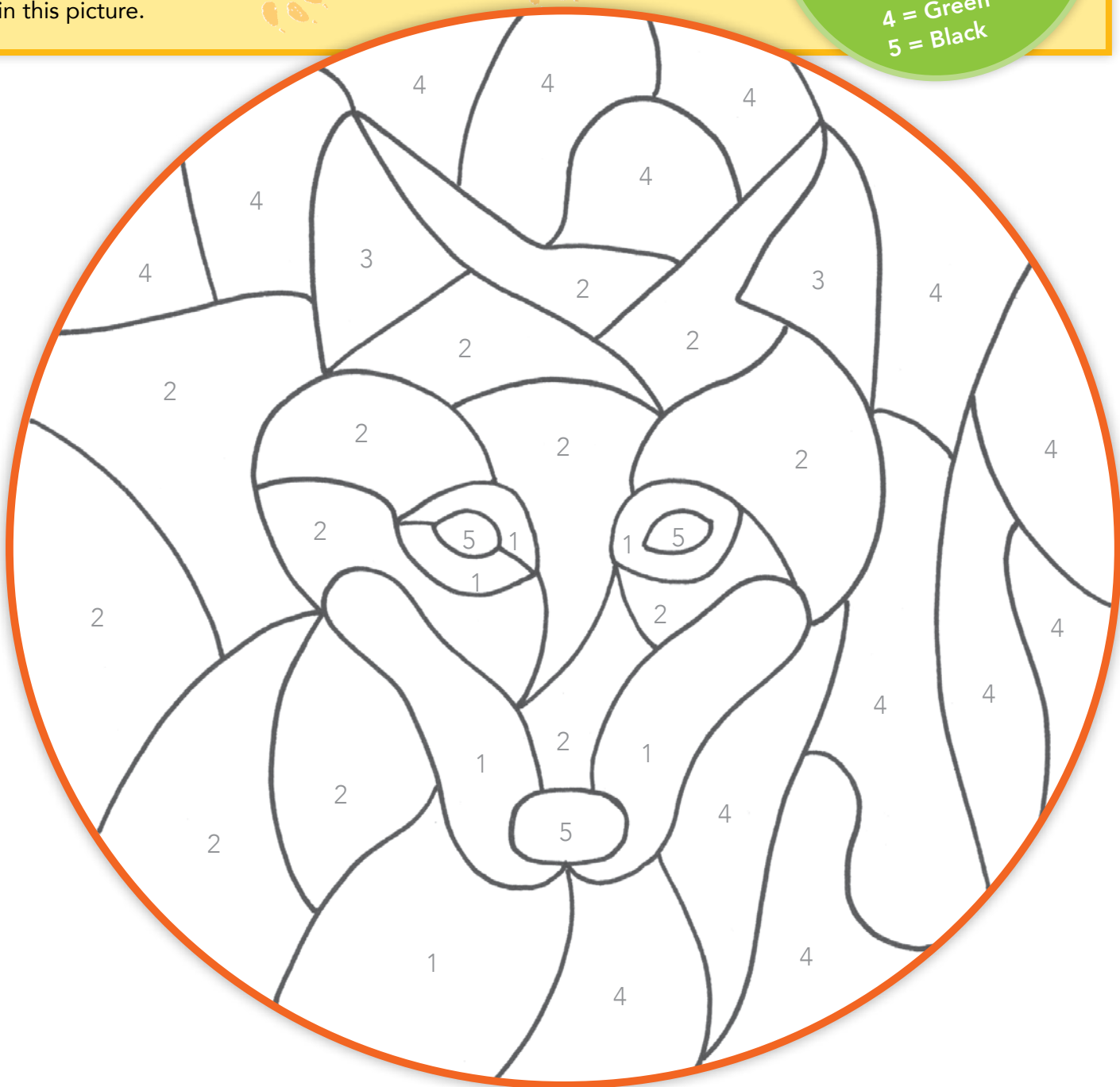
Hide & Seek

A wolf is hard to spot in its natural habitat because of the colors of its fur.

Follow the directions to find the wolf camouflaged in this picture.

Color:

- 1 = White or light brown
- 2 = Brown or gray
- 3 = Pink
- 4 = Green
- 5 = Black



Just the Facts Please! Animal Similes

Humans use many different expressions to compare animal and human behavior. One of the ways people do this is by using **similes**. Some of the similes under the animals below are based in fact. Others are fiction. Use the Animal Facts to help you decide if the simile is fact or fiction. Make a check mark in the correct box next to each animal.

Similes are phrases or statements that compare two things by using the words **as** or **like**.

Example:
Happy
as a clam.



1

Wise as an owl

- ☐ Fact
☐ Fiction

2



Blind as a bat

- ☐ Fact
☐ Fiction

4

Sneaky like a wolf



- ☐ Fact
☐ Fiction

3

Playing possum
(pretending
to be dead)



- ☐ Fact
☐ Fiction

5

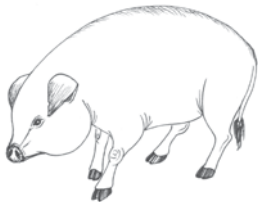
Slimy as a snake



- ☐ Fact
☐ Fiction

6

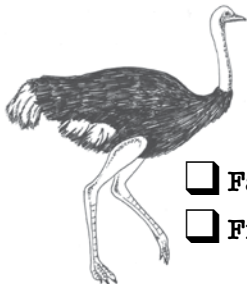
Dirty as a pig



- ☐ Fact
☐ Fiction

7

Burying your
head like
an ostrich



- ☐ Fact
☐ Fiction

8

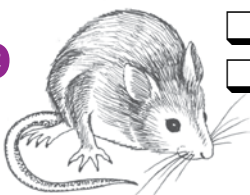
Busy as a beaver



- ☐ Fact
☐ Fiction

9

Quiet as a mouse



- ☐ Fact
☐ Fiction

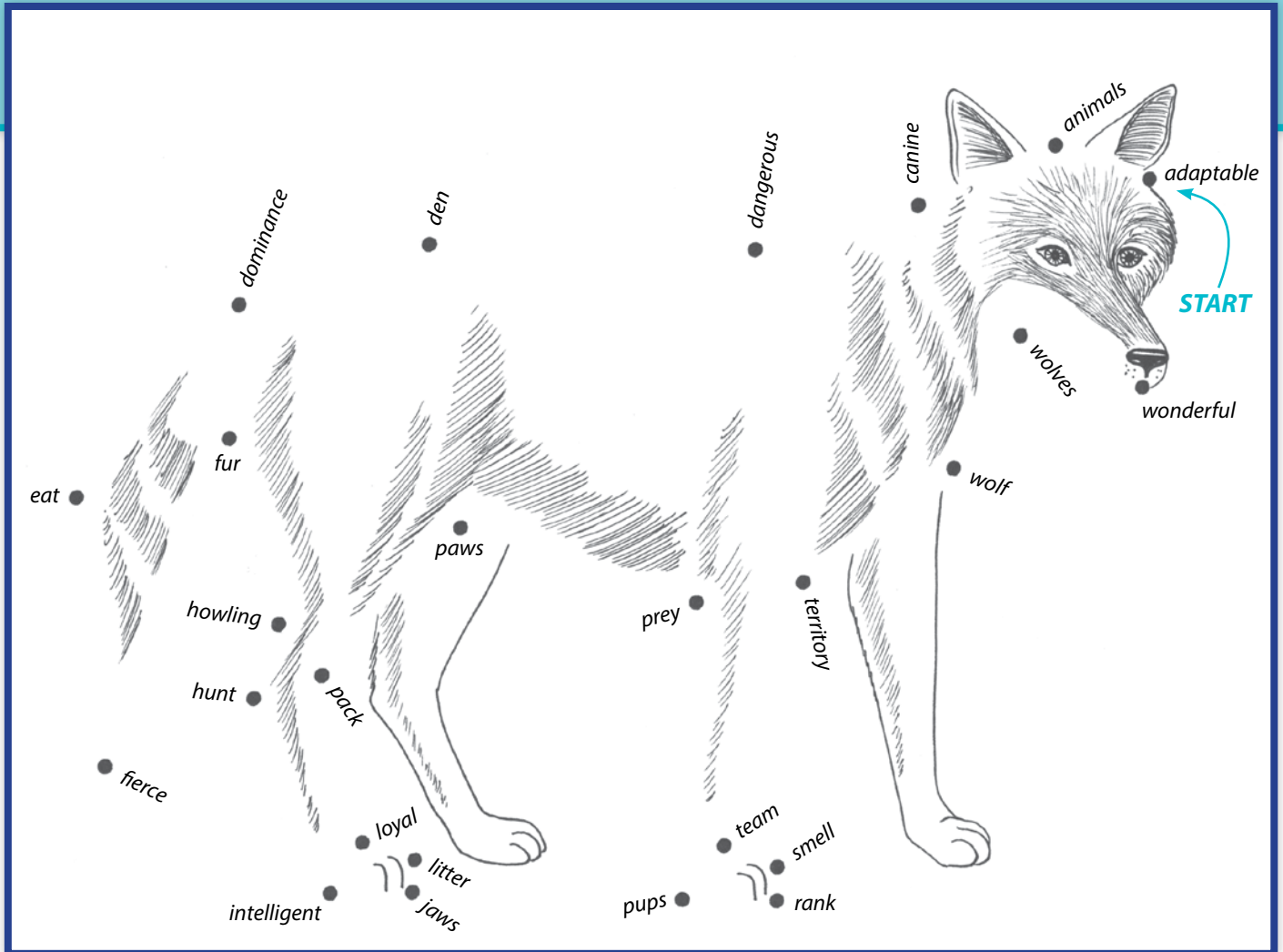
Animal Facts

- Fact:** Wolves are loyal to other wolves and very protective of their family pack.
- Fact:** To hide from predators, ostriches drop down and stretch out their necks along the ground. When an ostrich is really in danger, it is smart enough to get up and run.
- Fact:** Possums (or opossums) may go into a coma-like state and appear to be dead when threatened.
- Fact:** Owls have tiny brains for birds their size. They look wise because of their wide-open eyes.
- Fact:** Pigs are thick-skinned and get hot easily; they wallow in the mud to cool off. Pigs are usually as clean as cats.
- Fact:** Mice are small but noisy. They squeak, chirp, and twitter.
- Fact:** Snakes look wet when sunlight makes their scales glisten and shine. Snakes are really very dry.
- Fact:** Many bats have two ways of seeing—with their eyes and with their ears. They rely more on hearing (echolocation) than seeing to locate objects, especially in the dark.
- Fact:** Beavers are busy. A pair of beavers can fell a tree in a quarter of an hour. Beavers work constantly to keep their dams in good shape.

Answers
1. Fiction 2. Fiction 3. Fact 4. Fiction 5. Fiction
6. Fiction 7. Fiction 8. Fact 9. Fiction

The Leader of the Pack

Connect the words in alphabetical (ABC) order. Color the picture.



Be an Observer

Choose a wild animal to observe. You probably don't live in an area where you can see wolves, but any wild animal in your yard or a park will do! Watch the animal from a distance so you don't affect the way it acts.

Ask yourself:

- What does the animal do during the day? At night?
- What other animals live around it?
- How does it interact with those animals?
- What does the animal eat?
- How does it get its food?
- Where does the animal live?

Think of
some other
questions
to ask!



Answers
1. adaptable,
2. animals, 3. canine,
4. dangerous, 5. den,
6. dominance, 7. eat,
8. fierce, 9. fur,
10. howling, 11. hunt,
12. intelligent, 13. jaws,
14. litter, 15. loyal,
16. pack, 17. paws,
18. prey, 19. pups,
20. rank, 21. smell,
22. team, 23. territory,
24. wolf, 25. wolves,
26. wonderful.